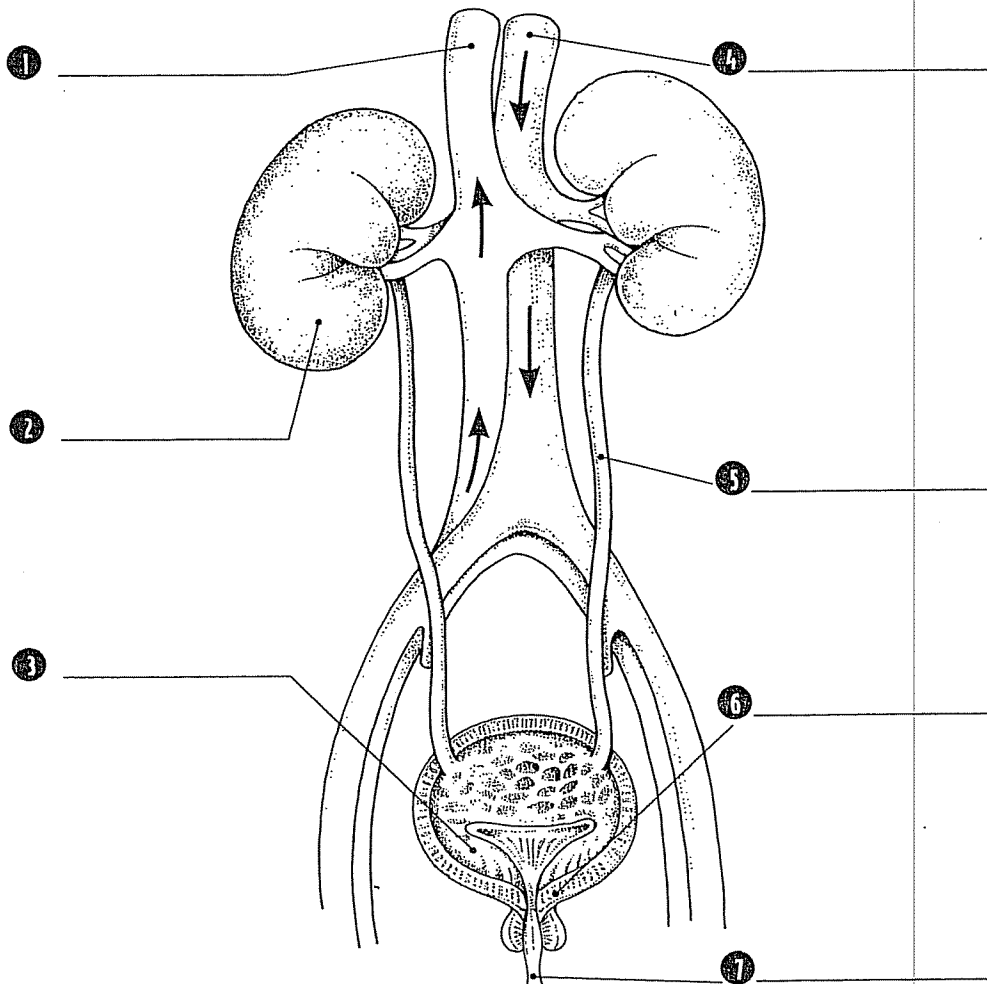


# The Urinary System

The human body needs water to survive. The urinary system makes sure the body does not have too much or too little fluid at any given time. Use the terms in the word box to label the diagram.

vein kidney muscle bladder ureter urethra artery



# The Digestive System

The digestive system converts food into energy. This complex system breaks down carbohydrates, proteins, and fats from foods into molecules small enough for the body to use. The alimentary canal is the main part of the digestive system. This canal is a series of organs which starts at the mouth and ends at the rectum. Use the diagram of the alimentary canal to obtain the information needed to complete the sentences. The sentences are in order.

- 1 Food first enters the \_\_\_\_\_ under the tongue secrete digestive juices.
- 2 Food leaves the mouth and enters the \_\_\_\_\_ an opening between the mouth and nasal cavities.
- 3 Food is squeezed down by muscles through the \_\_\_\_\_, a tube that runs from the pharynx to the stomach.
- 4 Food then enters an elastic-like muscular bag called the \_\_\_\_\_. This bag churns and squeezes the food while mixing it with digestive juices.
- 5 After food leaves the stomach, it enters a 20-foot-long, thin tube called the \_\_\_\_\_ where the food's nutrients are eventually absorbed into the bloodstream.
- 6 Food that has not been used in the small intestine moves on to a 5-foot-long, thick tube called the \_\_\_\_\_. This tube converts the food into feces.
- 7 Feces, food converted to semisolid waste, leave the large intestine and are held in a short tube called the \_\_\_\_\_ until they are expelled from the body.

